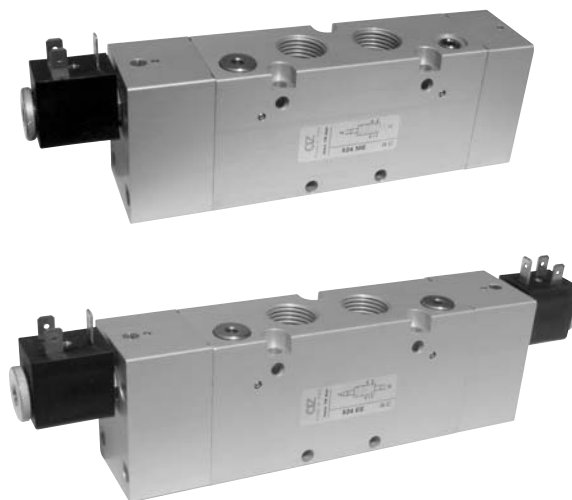


# valvole G1/2" azionamento elettropneumatico

*solenoid actuated valves - G1/2"*



- Valvole a spola 3/2-5/2-5/3 con attacchi filettati G1/2"  
*3/2-5/2-5/3 spool valves with G1/2" threaded ports*
- Elevatissima portata  
*Very high flow rate*
- Montaggio in linea  
*Installation in-line*
- Comandi elettrici con azionamento manuale bistabile  
*Solenoid pilots with detented manual override as standard*
- Multifunzionalità e adattabilità  
*Multifunction feature*



I prodotti di seguito indicati sono venduti senza bobine, da acquistarsi separatamente (vedi pag. 208).

*The following listed products are sold without coils, which are bought separately (refer to page 208).*

## Kit ricambi - spare parts

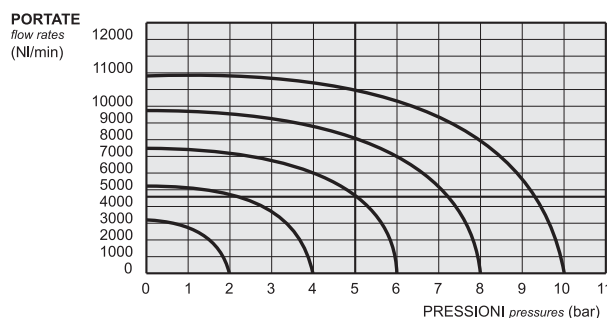
**02.030.2** : per valvole a 3/2 vie [for 3/2 way valves] ME - ME AS - MC

**02.031.2** : per valvole a 5/2 vie [for 5/2 way valves] ME - ME AS - MC

**02.032.2** : per valvole a 3/2 vie [for 3/2 way valves] EE - EE AS - CC

**02.033.2** : per valvole a 5/2 vie [for 5/2 way valves] EE - EE AS - CC

**02.034.2** : per valvole a 5/3 vie [for 5/3 way valves] EE - EE AS - CC



## Tempi di risposta - response times

monostabile <i>mono-stable</i>	TRA (14): 39 ms TRR (12): 60 ms
bistabile <i>bi-stable</i>	TRA (14): 90 ms TRR (12): 90 ms

## Materiali

**Corpo:** alluminio 11S

**Molle:** INOX

**Guarnizioni:** NBR

**Spola:** INOX

**Parti interne:** ottone OT58

## Materials

**Body:** aluminium 11S

**Springs:** stainless steel

**Seals:** NBR

**Spool:** stainless steel

**Internal parts:** brass OT58

Diametro nominale <i>Nominal orifice</i>		13 mm	
Portata nominale a 6 bar, $\Delta p$ 1 bar <i>Nominal flow rate at 6 bar, <math>\Delta p</math> 1 bar</i>		4600 NI/min	
Temperatura di esercizio <i>Temperature range</i>		max +60°C	
Pressione di esercizio <i>Working pressure</i>	al. interna monost. [monost. internal air supply]	al. interna bist. [bi-stable internal air supply]	alim. separata [separate air supply]
	2.5 ... 10 bar 0.25 ... 1 MPa	1 ... 10 bar 0.1 ... 1 MPa	-0.9 ... 10 bar -0.09 ... 1 MPa
Pressione di azionamento (per alimentazione separata) <i>Actuating pressure (for separate air supply)</i>	monostabile [mono-stable]		bistabile [bi-stable]
	2.5 ... 10 bar 0.25 ... 1 MPa		1 ... 10 bar 0.1 ... 1 MPa
Fluido <i>Fluid</i>	Aria filtrata 50 $\mu$ con o senza lubrificazione <i>50<math>\mu</math> filtered, lubricated or non lubricated air</i>		

# valvole G1/2" azionamento elettropneumatico

*solenoid actuated valves - G1/2"*



## Multifunzionalità e adattabilità della valvola

La funzione della valvola può essere variata in ogni momento secondo necessità cambiando la posizione dei tappi da M5 e G1/8" collocati nel corpo secondo gli schemi sottoriportati.

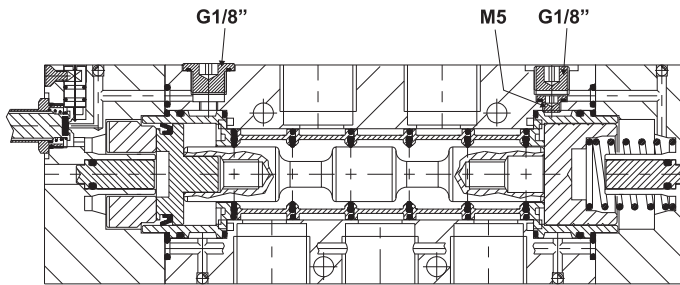
La valvola è fornita nella configurazione richiesta al momento dell'ordine. Eventuali tappi aggiuntivi possono essere ordinati separatamente.

## Multifunction feature of the valve

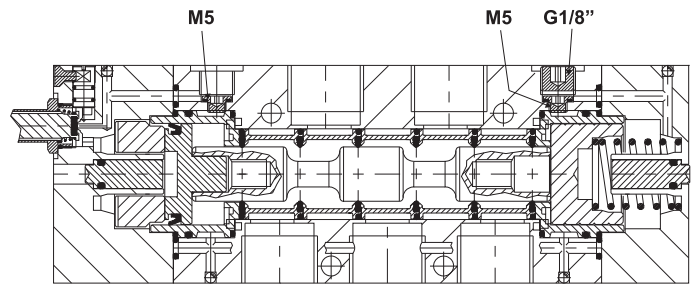
*The function of the valve can be changed in any moment. To do this it is enough to change the position of the plugs M5 and G1/8", which are inserted into the body according to the scheme.*

*The valve is supplied in the configuration specified on the order. More plugs can be ordered separately.*

**324 ME  
524 ME**

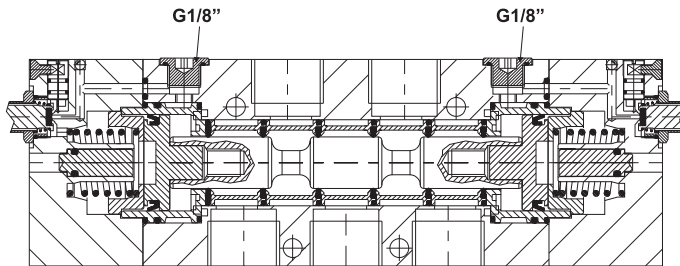


**324 ME AS  
524 ME AS**



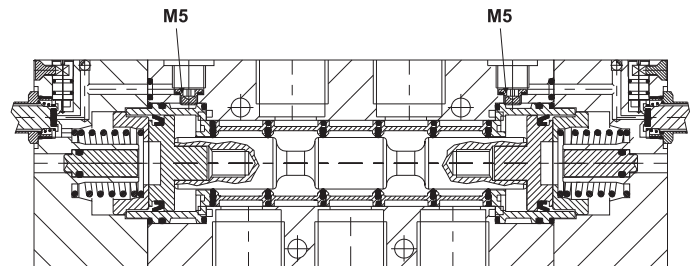
**324 EE  
524 EE**

**5243C EE  
5243A EE  
5243P EE**



**324 EE AS  
524 EE AS**

**5243C EE AS  
5243A EE AS  
5243P EE AS**



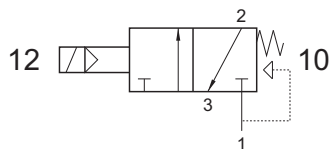
# valvole G1/2" azionamento elettropneumatico

solenoid actuated valves - G1/2"



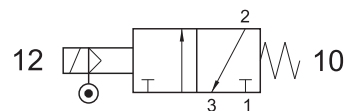
## 324 ME

3/2 1/2" NC comando elettrico - ritorno a molla  
3/2 1/2" NC solenoid pilot - spring return



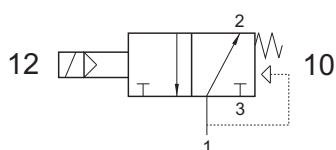
## 324 ME AS

3/2 1/2" comando elettrico alimentazione separata - ritorno a molla  
3/2 1/2" solenoid pilot with separate air supply - spring return



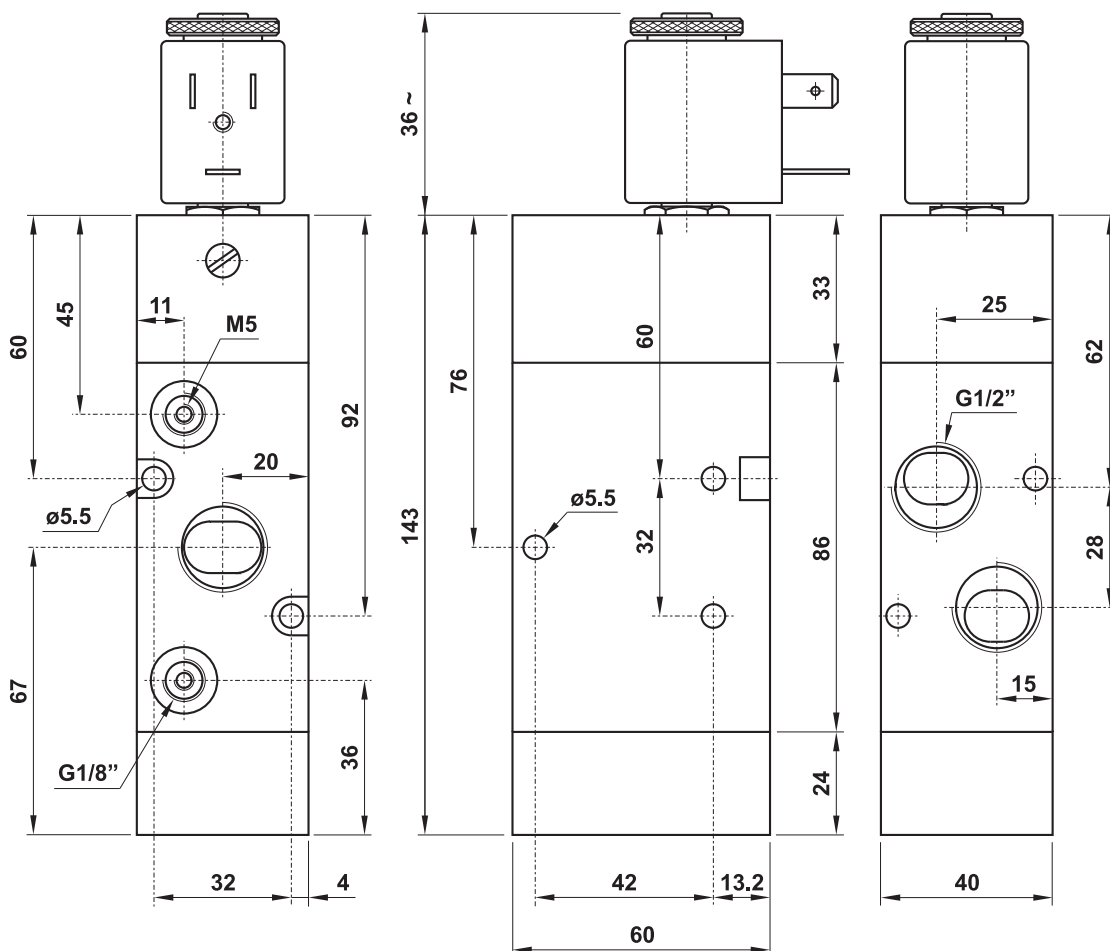
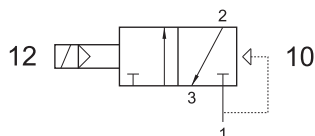
## 324 MEA

3/2 1/2" NA comando elettrico - ritorno a molla  
3/2 1/2" NO solenoid pilot - spring return



## 324 EFP

3/2 1/2" NC comando elettrico - ritorno a molla pneumatica  
3/2 1/2" NC solenoid pilot - pneumatic spring return



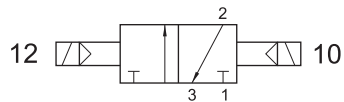
# valvole G1/2" azionamento elettropneumatico

*solenoid actuated valves - G1/2"*



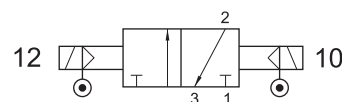
## 324 EE

3/2 1/2" doppio comando elettrico  
3/2 1/2" double solenoid pilot



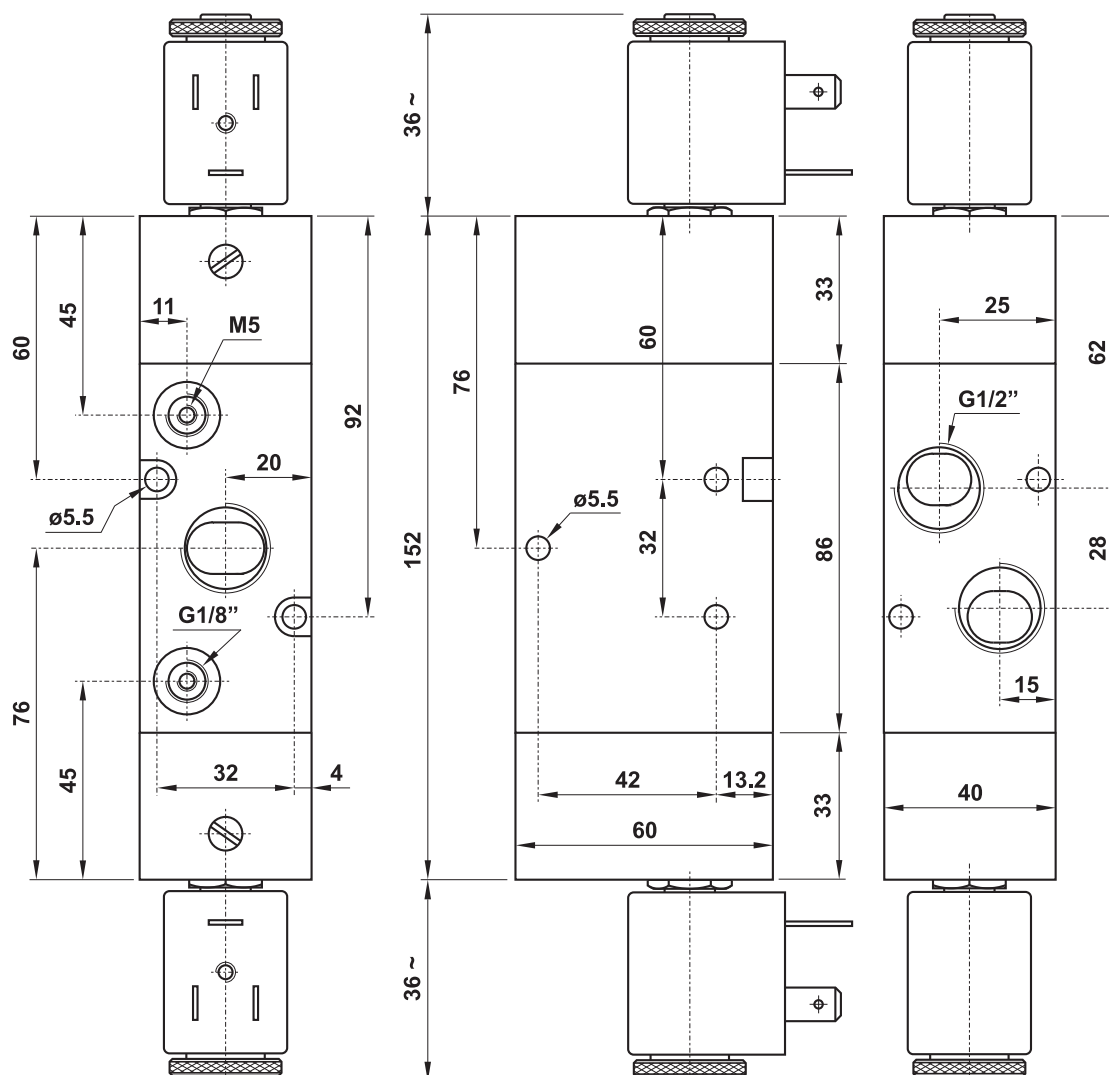
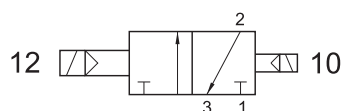
## 324 EE AS

3/2 1/2" doppio comando elettrico alimentazione separata  
3/2 1/2" double solenoid pilot with separate air supply



## 324 EED

3/2 1/2" doppio comando elettrico - con differenziale  
3/2 1/2" double solenoid pilot - with differential



# valvole G1/2" azionamento elettropneumatico

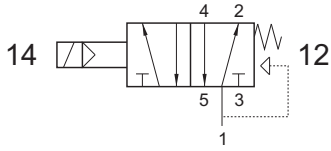
*solenoid actuated valves - G1/2"*



## 524 ME

5/2 1/2" comando elettrico - ritorno a molla

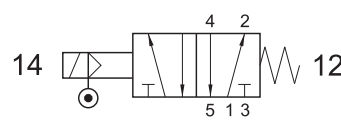
*5/2 1/2" solenoid pilot - spring return*



## 524 ME AS

5/2 1/2" comando elettrico alimentazione separata - ritorno a molla

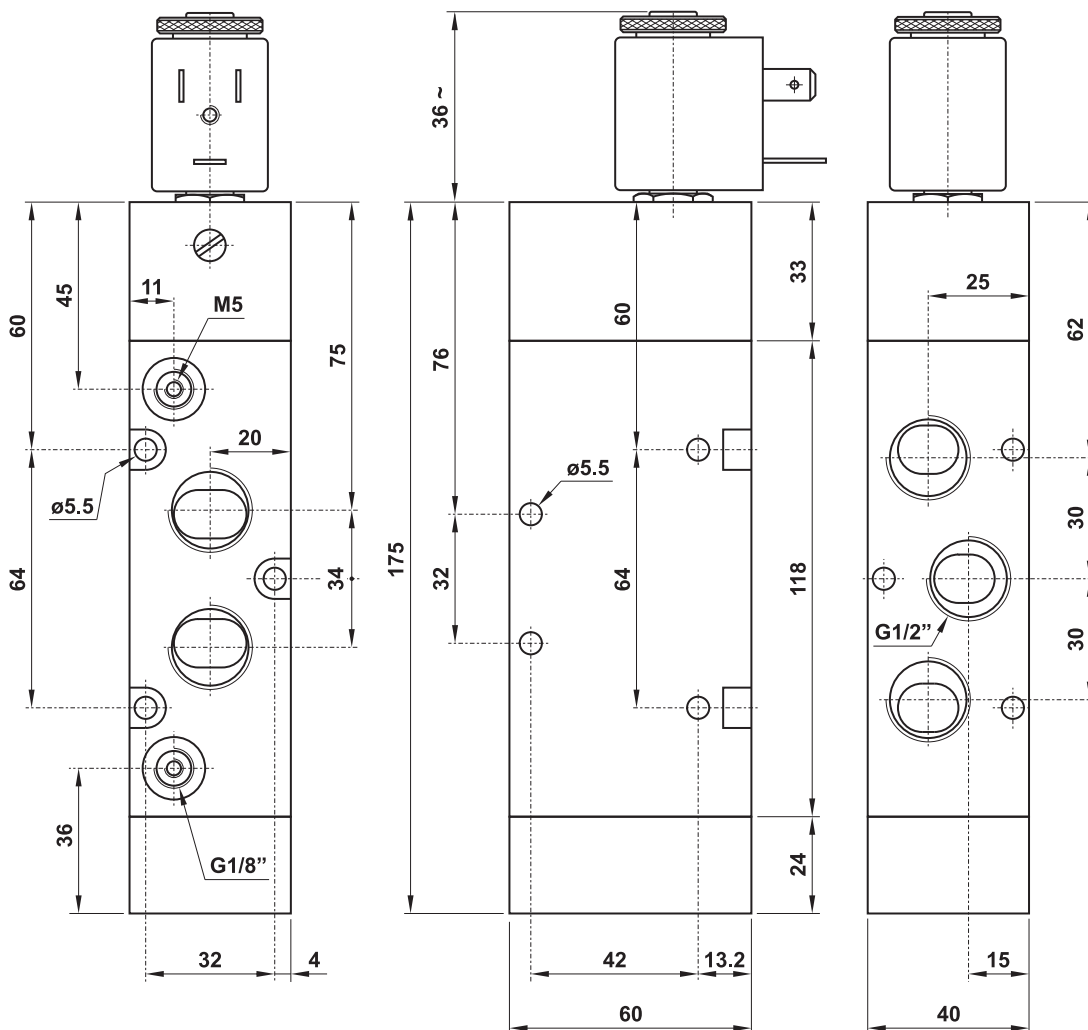
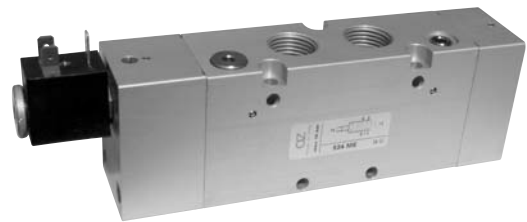
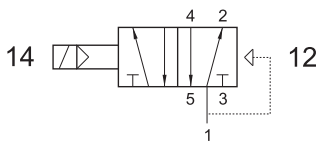
*5/2 1/2" solenoid pilot with separate air supply - spring return*



## 524 EFP

5/2 1/2" comando elettrico - ritorno a molla pneumatica

*5/2 1/2" solenoid pilot - pneumatic spring return*



# valvole G1/2" azionamento elettropneumatico

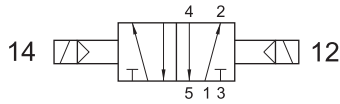
*solenoid actuated valves - G1/2"*



## 524 EE

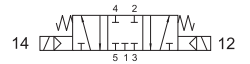
5/2 1/2" doppio comando elettrico

*5/2 1/2" double solenoid pilot*



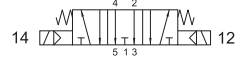
## 5243C EE

centri chiusi  
*closed centres*



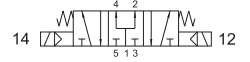
## 5243A EE

centri aperti  
*open centres*



## 5243P EE

centri in pressione  
*pressurized centres*



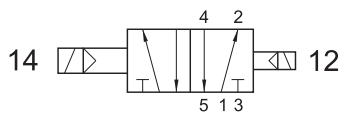
5/3 1/2" doppio comando elettrico

*5/3 1/2" double solenoid pilot*

## 524 EED

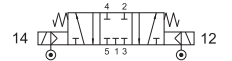
5/2 1/2" doppio comando elettrico - con differenziale

*5/2 1/2" double solenoid pilot - with differential*



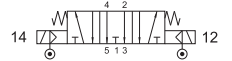
## 5243C EE AS

centri chiusi  
*closed centres*



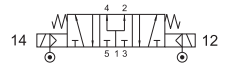
## 5243A EE AS

centri aperti  
*open centres*



## 5243P EE AS

centri in pressione  
*pressurized centres*



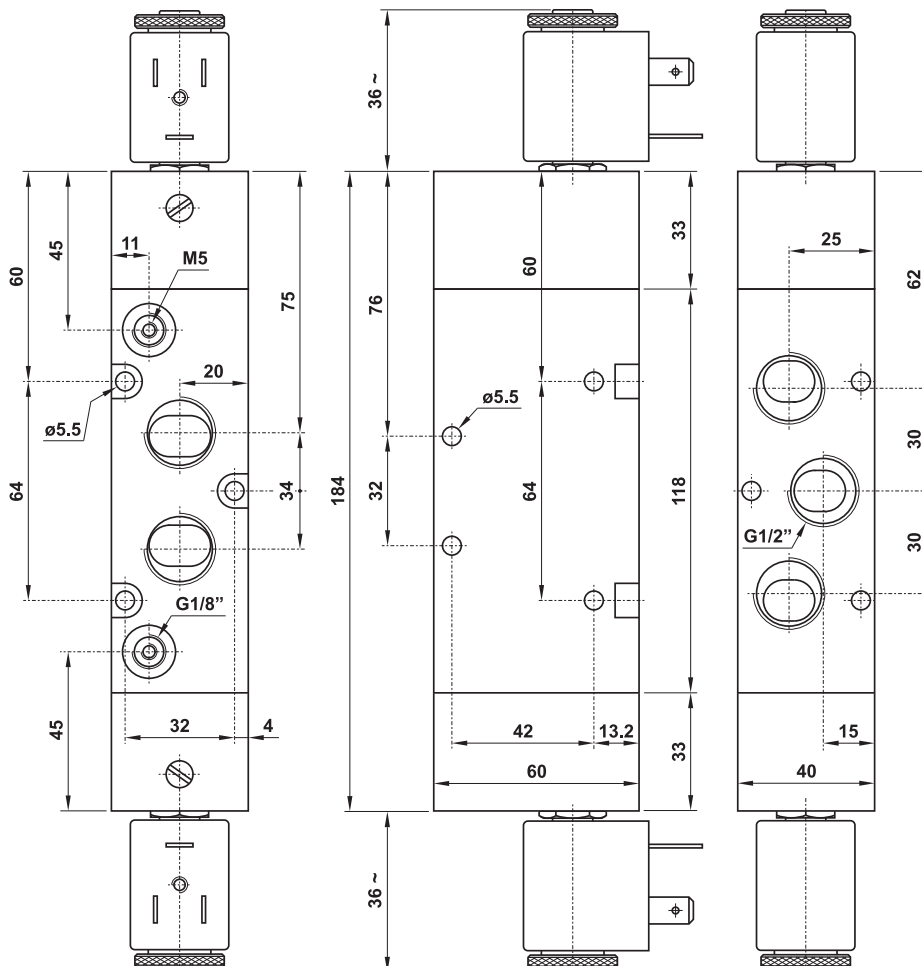
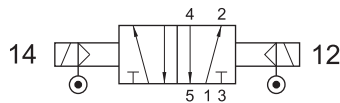
5/3 1/2" doppio comando elettrico alimentazione separata

*5/3 1/2" double solenoid pilot with separate air supply*

## 524 EE AS

5/2 1/2" doppio comando elettrico alimentazione separata

*5/2 1/2" double solenoid pilot with separate air supply*



# bobine e connettori 22 mm

22 mm coils and connectors



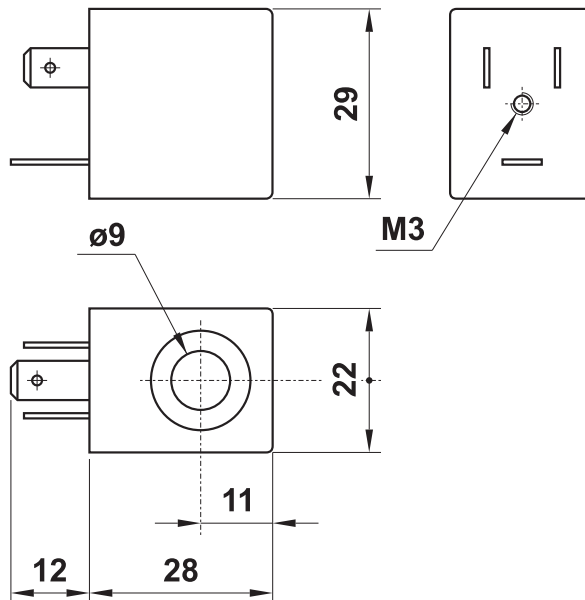
22 mm



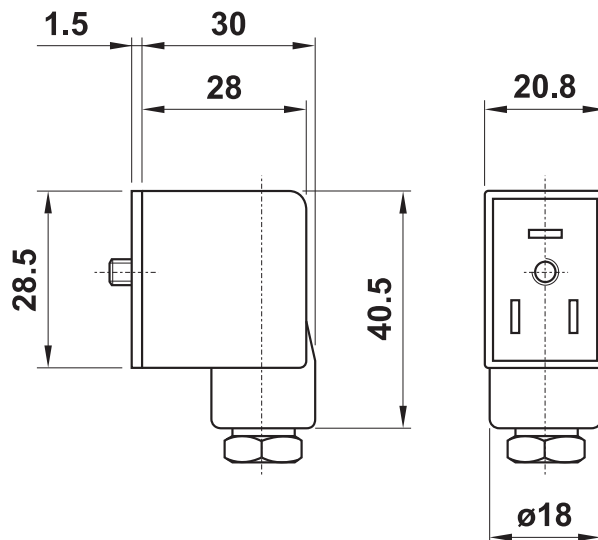
temperatura max di esercizio	+50°C	max working temperature
inserimento	ED 100%	duty cycle
protezione con connettore correttamente montato	IP 65	protection with connector correctly mounted
tolleranza di tensione	±10%	tension tolerance

- a richiesta basso assorbimento 1.5W  
low consumption (1.5W) on request

codice code	tensione tension	consumo - power	
		a regime rated	di spunto inrush
00.167.0	12V DC	3W	
00.028.0	24V DC	3W	
00.029.0	24V 50/60Hz	5VA	7.5VA
00.030.0	110V 50/60Hz	5VA	7.5VA
00.031.0	220V 50/60Hz	5VA	7.5VA



codice code	colore colour	cavo cable	tipo type
00.197.0	nero black	PG09	normale standard
00.344.0	trasparente transparent	PG09	con LED 24V with LED 24V
00.345.0	trasparente transparent	PG09	con LED 24V e VDR with LED 24V and VDR
00.346.0	trasparente transparent	PG09	con LED 115V with LED 115V
00.347.0	trasparente transparent	PG09	con LED 115V e VDR with LED 115V and VDR
00.394.0	trasparente transparent	PG09	con LED 230V with LED 230V
00.395.0	trasparente transparent	PG09	con LED 230V e VDR with LED 230V and VDR



## PEZZI DI RICAMBIO - spare parts

<p>canotto per elettropilota armature for solenoid pilot</p> <p>NC : 00.088.0 NA (NO) : 00.306.0</p>	<p>ghiera in alluminio e rondella aluminium nut and elastic ring</p> <p>00.125.2</p>
--	--